

S-line Base

Single/Double

User guide
English

Introduction

The S-Line Base single/ double is a modular charging post for mounting up to four Charging Robots. With S-line Base, it is possible to choose between multiple configurations: 1-Way setup, where only one charger is mounted; 2-Way setup, with two chargers; and 4-Way setup, with up to 4 chargers installed

Technical specifications

General

Dimension (mm): H 1360 x B 120 x D 80
Weight: 5 kg
Material: Aluminium
Finish: Powder coating (C5)
Colour: Black
IP-degree: IP44
Insulation class: Class 1
Impact resistance: IK10

Electrical connection

Connection via terminal block requires the circuit to be RCD protected.

Cable size

Maximum support of 16mm² flexible conductors with ferrules and 25mm² solid conductors
Cable length between terminal block and chargers: 1150 mm
Conductor material: CU or ALU

Safety instructions

Read the entire manual carefully before installing and operating the product. Observe the following instructions:

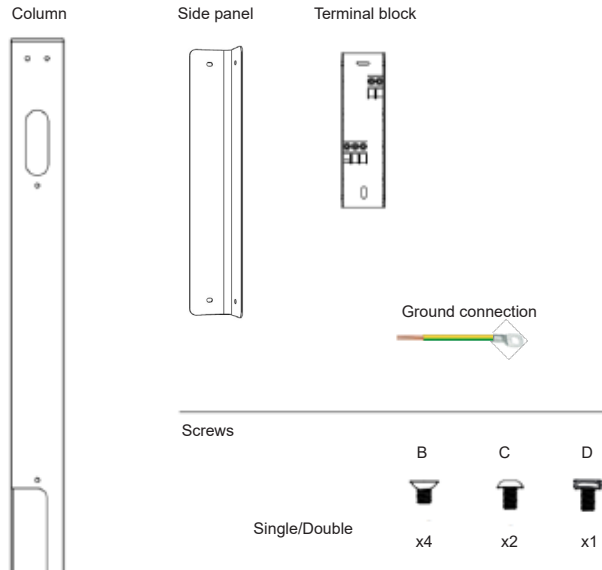
Safety instructions for the installation

- This product shall only be installed, repaired or serviced by an authorised electrician. All applicable local, regional and national regulations for electrical installations must be respected.
- Danger to life due to high electrical voltage. Never make any changes to components or connecting cables.
- The installation must not be carried out in the vicinity of explosive atmospheres or in areas where there is a risk of flowing water.
- The product must be installed on a permanent location.
- The terminals in the backplate are energised when the power circuit is closed and must never be in direct contact or in contact with anything other than the plug-in electronics (terminals).
- Depending on the type of installation, official authorisations may be required prior to installation.

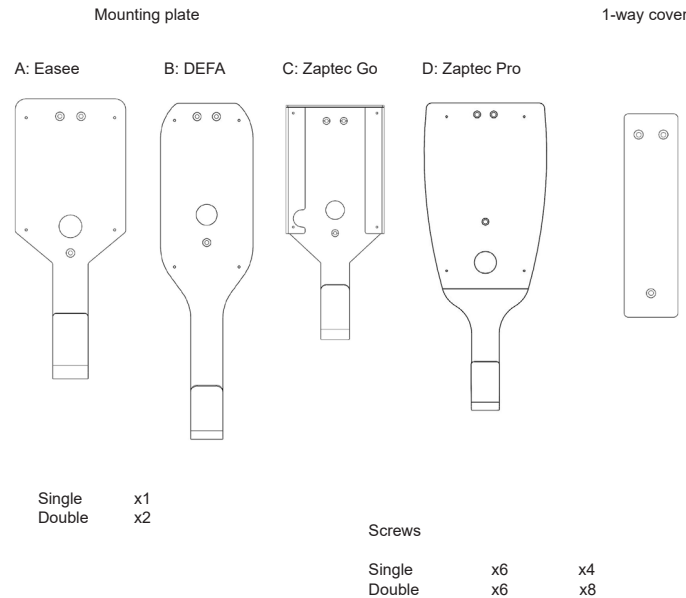
Safety instructions for operation

- Danger to life due to high electrical voltage. Never make any changes to components or connecting cables.
- Always have the prescribed maintenance, installation and any repair work carried out by an authorised electrician and in accordance with local requirements.
- If a fire occurs, do not use water for extinguishing. Never clean the product with high pressure or running water.
- Do not immerse the product in water or other liquids.
- It is advisable to have an extra protection around the post when mounted in an open parking space.
- Make sure that children do not play with the product.
- Do not use extension cords or unapproved adapters in combination with the product.
- Even if the Charging Robot is designed to withstand normal weather conditions, we recommend protecting it from direct sunlight or exposure to extreme weather conditions.
- Do not use the product near strong electromagnetic fields or in the direct vicinity of radio transmitters.

Common parts

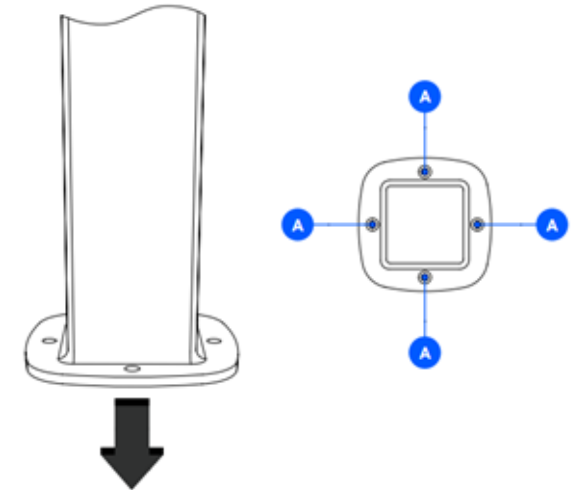


Single/Double



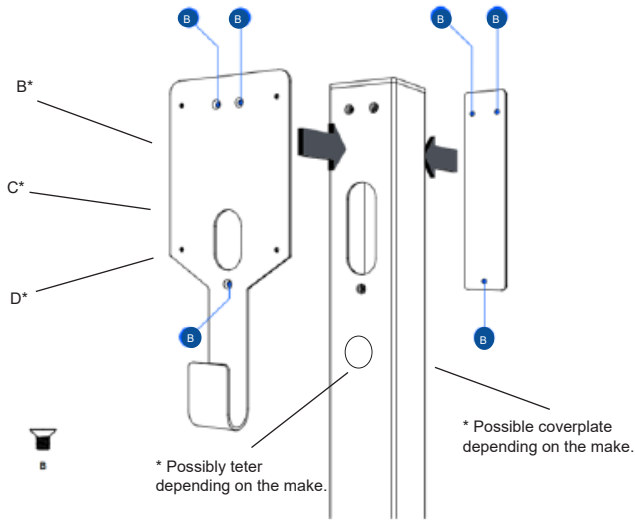
Adapter plate

When fastening to soil, suitable base foundation or fastening material is recommended. The base of the column (A) fits 110 c/c S-Line bolt foundation or ECO-Base foundation with adapter bracket.



1 1-way Plate and cover

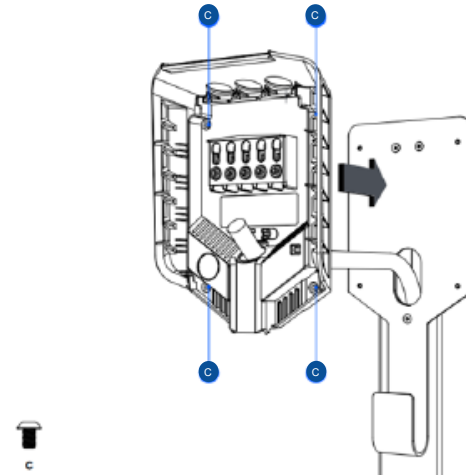
Attach the mounting plate and/or the cover plate with the 6 flat head screws.



* The mounting plate looks different depending on the make.

2 1-way Backplate

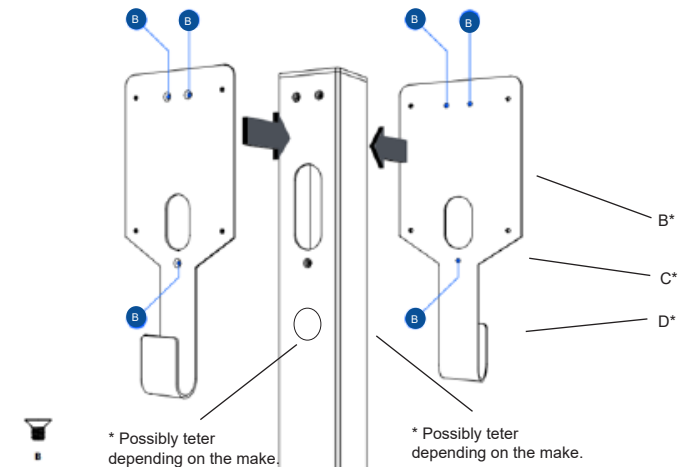
Thread the cable through the hole in the column and the charger backplate before attaching it with 4 rounded head screws.



NOTE: The backplate looks different depending on the make.

1 2-way Plates

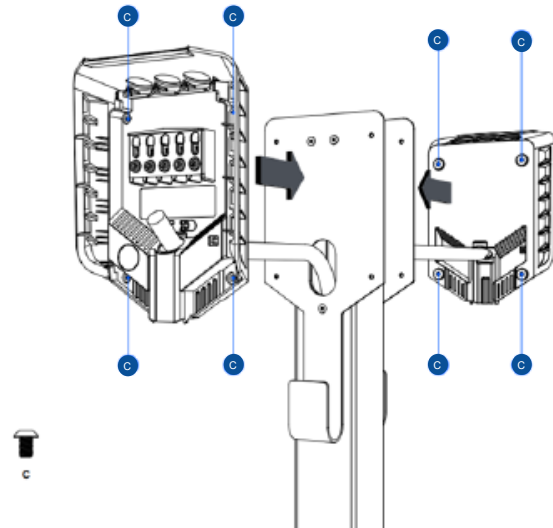
Attach the mounting plates to the column with 3 flat head screws each (6 screws total).



* The mounting plates look different depending on the make.

2 2-way Backplates for 2-way

Thread the cables through each hole in the column and the chargers backplates before attaching them with 4 rounded head screws (8 screws total).



NOTE: The backplate looks different depending on the make.

3 Wiring

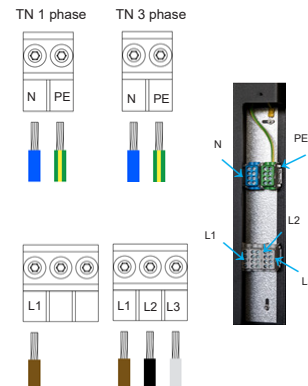
- Strip the individual wires by 12 mm. If the cable has flexible conductors, it is recommended to use ferrules on stranded wires. Use correct tools to press them.
- Tighten the screw terminal with a torque of 5 Nm.

NOTICE! Dielectric grease must be added when using ALU conductors.

NOTICE! When connecting multiple backplates in parallel, each screw terminal serves as a coupling point for adjacent backplates. All backplates must be connected with the same phase sequence. External junction boxes or flat cables can be used if it is more convenient.

NOTICE! It's recommended to follow the existing colour codes used in the installation. Depending on national standards, the colours of the cables can vary from the illustrations. The illustrations in this manual follow the IEC 60446 standard.

NOTICE! Before turning on the power, make sure the wires are properly connected and tightened. Test this by pulling on each wire.



4 Side panel

After connecting all wires to the Power Rail, it is time to mount the side panel with the 4 rounded head screws. Install cables according to the pictures below.

